

Create Strength Group UKRW-2026 August 25

UK RECOVERY WALK 2026 BRADFORD

UK Recovery Walk 2026 – Bradford Bid Summary

Proposed Date: Saturday, 12th September 2026

Proposed Location: City Park, Bradford

Overview

Bradford, through the leadership of Create Strength Group (CSG), is proud to put forward its bid to host the UK Recovery Walk 2026. CSG, a Bradford-based Lived Experience Recovery Organisation (LERO), has garnered widespread local and strategic support to lead this initiative. The proposal was first submitted in 2024 via the **Bradford District Combating Alcohol and Drugs Partnership (CADP)** and has since received endorsement and integration into CADP's strategic planning and delivery framework.

Strategic Alignment

Hosting the Recovery Walk 2026 is in strong alignment with Bradford's priorities in treatment and recovery, which include:

- Evidence-Based Practices: Building on proven strategies and real-time data.
- Lived Experience Leadership: Centering the voices of those with lived and living experience.
- Adaptability & Partnership: An open, flexible approach that evolves with community input.
- System-Wide Engagement: Shared responsibility across stakeholders.
- Visibility & Impact: Using public platforms to raise awareness and drive systemic change.

Local Support & Infrastructure

There is a high level of confidence from Bradford Council, Public Health Bradford, and the CADP in CSG's ability to deliver a well-organised, impactful event. CSG has already been resourced to begin co-ordinating planning efforts and leading the working group.

Bradford is ideally placed to host this national event. City Park, the proposed venue, is in the heart of the city, surrounded by heritage landmarks such as the Wool Exchange, St George's Hall, City Hall, and Norfolk Gardens. Its centrality ensures accessibility by both public and personal transport. Additionally, the event aligns perfectly with Bradford's City of Culture 2025 legacy. It offers an opportunity to merge arts, culture, and recovery, showcasing the vibrancy and resilience of Bradford's communities.

About Create Strength Group (CSG)

Founded in 2015, CSG supports individuals, families, and communities impacted by addiction and related issues. With contracts spanning drug and alcohol recovery, criminal justice, domestic and sexual violence, and emerging substances, lived experience is at the heart of all we do.



Vision for the Recovery Walk 2026

The Recovery Walk will not only celebrate recovery but will:

- Showcase the power of lived experience in shaping systems and communities.
- Create space for creative expression from local artists and those in recovery.
- Bring together treatment and recovery organisations across the UK.
- Celebrate Bradford as a historic and modern centre of recovery and resilience.

Create Strength Group UKRW-2026 August 25

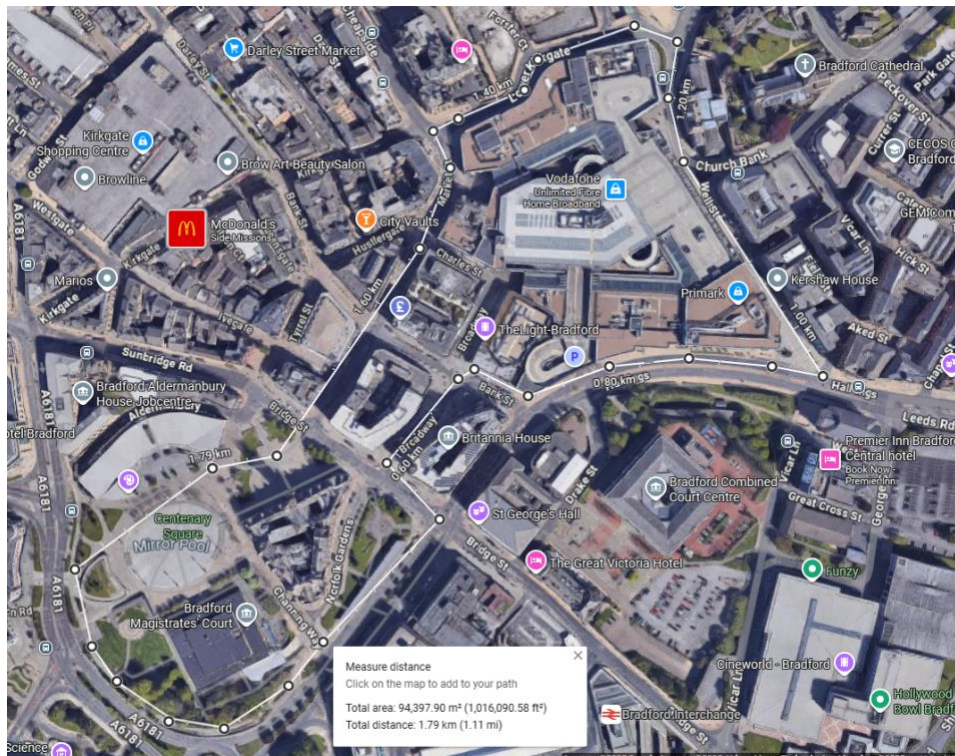
Recovery Walk

Bradford's central location, excellent public transport infrastructure, and well-connected travel routes make it an ideal host for the UK Recovery Walk 2026. Whether arriving by train, bus, car, or air, participants from across the country will find the city welcoming, accessible, and easy to navigate. Combined with its commitment to recovery, inclusion, and community celebration, Bradford is perfectly placed to host this landmark event.

Bradford is a dynamic, culturally rich city located in West Yorkshire. With a population of over 500,000, Bradford is a diverse and youthful city with a long-standing commitment to community wellbeing, inclusion, and innovation.

Bradford has a long and complex history with drug and alcohol addiction, shaped by post-industrial decline, social inequality, and evolving patterns of substance use. The city has faced significant challenges, including high levels of alcohol-related harm, entrenched opiate and crack cocaine use, and emerging drug trends among young people. In response, Bradford has developed a robust, system-wide approach centered on lived experience, evidence-based practice, and cultural sensitivity. Through the Bradford District Combating Alcohol and Drugs Partnership (CADP) and organisations like Create Strength Group (CSG), the city has prioritised trauma-informed care, peer-led recovery, and cross-sector collaboration. Bradford is committed to building recovery-friendly communities that not only reduce harm but also celebrate resilience, lived experience, and the transformative power of recovery.

Planned for Saturday the 12th of September 2026 the walk starts and ends in City Park a vibrant and pedestrianized space in the heart of the city. City Park has a main square with fountains and is a focal point for the city, it has been an important outside venue for City of Culture 2025. The planned route is c.1.1 miles in length and entirely flat.



City Park has been provisionally booked for the event.

Create Strength Group UKRW-2026 August 25

Recovery Village

Location: City Park, Centenary Square, Bradford City Centre BD1 1HY

- A fully pedestrianised public space dominated by the 19th century City Hall. Perfectly situated for shopping, entertainment and cultural venues. 2 railway stations within a 5-minute walk, with access to good parking.



City Park is much more than a public square—it's a dynamic centerpiece that brings Bradford's story to life. For City of Culture 2025, it's been the stage for both grand spectacles like RISE and community-centred celebrations like BD: Festival and Taste BD.

Located around the Grade I-listed Bradford City Hall, City Park spans approximately 6 acres, with three main zones: Norfolk Gardens (east), Centenary Square (front of City Hall), and at the heart the Mirror Pool area to the northwest—

the largest urban water feature in the UK—

with: A 4,000 m² shallow pool and a spectacular 30 m (100 ft) fountain.

This landscaped forecourt includes lawns, seating, cafés, and open-air space for markets, exhibitions, and gatherings.



We aim to emulate some of the most notable events of this year's City of Culture with DJs, food stalls, craft stalls, music, live performances and family friendly entertainment. We are working with the events team responsible for a whole range of City Park successes and will benefit from using existing event management, food and entertainment resources and contacts.

We plan to run mutual aid groups through the day and will create the opportunity for a wide range of Bradford's recovery providers to participate. We envisage family and community support being an important part of this.



<https://www.visitbradford.com>

Create Strength Group UKRW-2026 August 25

Recovery Walk 2026 Conference

Venues

A selection of appropriate city centre conference venues are under consideration; initial contact has been made but a confirmed choice and booking is dependent upon Bradford's bid being successful. We have extensive experience of catering for events and a wide range of catering supply options for the day.

1. Bradford Live

Bradford Live blends historic grandeur with state-of-the-art facilities, offering flexible spaces appropriate for a wide range of conference formats. With outstanding technical capabilities, bespoke catering, and full event support.

Main Auditorium

Seating: up to 3,052 seated, or 3,800 standing

Features include excellent sightlines, a large stage, and professional lighting & sound systems.

Ballroom

Capacity: 400 seated, 500 standing, 700 reception-style

A beautifully ornate space with high ceilings, wooden floors, and intricate Art Deco trimmings.

Gaumont Room

Suitable for mid-scale functions: 200 seated, 300 standing.

Boiler Room

Cozy, stylish venue holding up to 60 seated or 100 standing.

Bradford Live Lounge (Art-Deco Lounge)

Intimate space for up to 40 standing guests



2. St Georges Hall

St George's Hall is a Grade II* Victorian concert hall located on Bridge Street in Bradford city centre, originally opened in 1853 and extensively refurbished from 2016 to 2019.

St George's Hall uniquely combines historic elegance with contemporary functionality—ideal for conferences that benefit from architectural prestige, clear sightlines, excellent acoustics, and inclusive amenities.

Seating: Up to 1,335 in a short-stage configuration.



3. Midland Hotel

Built between 1885 and 1890 and restored to maintain its Victorian grandeur, the Midland Hotel is a centre piece of architectural elegance in Bradford, located at Cheapside, adjacent to Forster Square station. Located within 100 meters of Bradford Forster Square Station, with easy road access via the M606 and proximity to Leeds-Bradford Airport (around 6–8 miles). The hotel boasts 9 to 11 versatile event spaces, catering to gatherings ranging from small board meetings to grand conferences for up to 400 attendees.

Create Strength Group UKRW-2026 August 25

Princes Ballroom

Largest and most ornate room accommodates up to 400

French Ballroom

Smaller but equally elegant, with chandeliers & private bar. Accommodates up to 180

Forster Suite

Mid-sized, flexible layout for trainings or meetings. accommodates up to 100.

Pullman / Wyvern / Blue Rooms / Irving

Perfect for small meetings and breakout sessions. Accommodate up to 45.

Conference Centre

Flexible medium-space with private foyer; accommodates up to 100.



4. Valley Parade (University of Bradford Stadium)

Valley Parade, the home of Bradford City FC since 1903, has evolved into a versatile venue for conferences, corporate gatherings, receptions, and weddings. It offers extensive facilities across its stadium complex to accommodate a wide range of events. With excellent accessibility and parking for up to 400 vehicles, simplifying logistics for attendees.

President : capacity up to 40

Chairman: capacity up to 250

Patrons: capacity up to 300

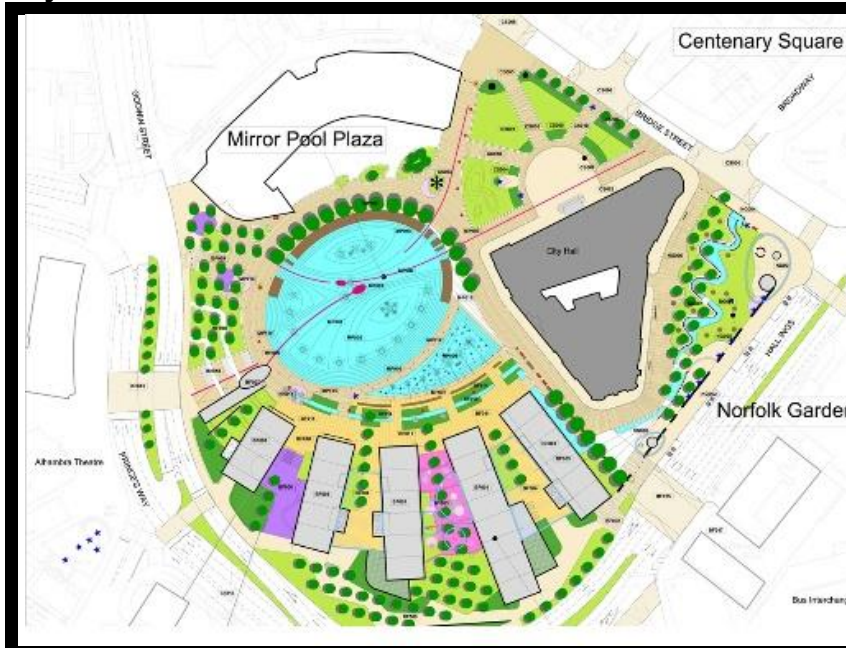
Hendrie Suite: capacity up to 400

McCall Suite: capacity up to 500

Banqueting Suite: capacity up to 900



City Park



Create Strength Group UKRW-2026 August 25

Preliminary Budget

Item	Cost	Notes
Conference	£5,000	In discussions with a number of city centre venues including our first-choice location at Bradford Live
Walk	£10,000	Planned walk include traffic management, full marshaling, volunteer costs, materials, planning fees and safety protocols.
Recovery Village	£30,000	Cost includes event planning, staging, performers, equipment, facilities and booking fees.
Promotion	£2,500	Full comms and promotion campaign heavily on social media.
Contingency	£4,750	10% inflationary increase/emergencies
Total	£52,250	

Create Strength Group UKRW-2026 August 25

Transport Links

By Train

Bradford is served by two city centre railway stations:

- Bradford Interchange – offering direct connections to Leeds, Manchester Victoria, Blackpool, and Halifax.
- Bradford Forster Square – providing services to Leeds, Ilkley, and Skipton.

Both stations are within 5–10 minutes walking distance from City Park, the proposed venue for the Recovery Walk.

Key rail connections:

- London Kings Cross to Leeds in under 2.5 hours, with frequent connecting trains to Bradford (15–20 minutes)
- Manchester Victoria to Bradford in under 1 hour
- Direct access to TransPennine and Northern Rail networks

By Road

Bradford is easily accessible via the UK motorway network:

- M62 (East-West): Connecting Manchester, Liverpool, and Hull
- M1 and A1(M): For access from the Midlands, London, and the North East
- Key A-roads include the A650, A6177, and A658, providing direct access into the city centre

Ample parking facilities are available in and around the city centre, including multi-storey and on-street parking near City Park.

By Air

Bradford is served by:

- Leeds Bradford Airport (LBA) – Located just 8 miles from the city centre (~20 minutes by car or shuttle). LBA provides flights to and from major UK and European destinations.
- Manchester Airport – A major international hub approximately 50 miles away, with direct rail links via Manchester Victoria.

By Bus and Coach

Bradford Interchange is also a major hub for regional and national coach services, including National Express and Megabus, making the city accessible to those travelling on a budget.

Notable Bradford Hotels

- **Great Victoria Hotel** – A classic Victorian railway hotel opposite Bradford Interchange, offering historic charm and a central location.
- **Midland Hotel** – A 3-star city-centre hotel built in the late 19th century by the Midland Railway company.
- **Holiday Inn Express Bradford City Centre** – A modern, reliable chain located within the Leisure Exchange, complete with Free Wi-Fi and breakfast.
- **Cedar Court Hotel Leeds / Bradford** – Spacious and well-equipped with leisure and conference facilities, ideal for both business and leisure.
- **Leonardo Hotel Bradford** – Features 198 air-conditioned rooms and is conveniently located in the centre with great connectivity.
- **Cambridge Hotel Bradford Central** – A comfortable 3-star option located near major transport links, offering good value.

Create Strength Group UKRW-2026 August 25

- **Abbey Lodge (Shipley)** – Boutique-style, located in Shipley near Saltaire UNESCO site, under a mile from Shipley and close to Bradford.
- **Mercure Bradford Bankfield Hotel (Bingley)** – A Gothic mansion set on the River Aire.
- **Hollins Hall Hotel & Country Club (Shipley)** – A country escape giving you sophistication, countryside views, and leisure amenities.
- **Best Western Bradford Guide Post Hotel (Low Moor)** – Offers free Wi-Fi and parking, set slightly further out but still accessible.
- **Travelodge Bradford / Travelodge Bradford Central** – Budget-friendly chain hotels with multiple locations in and around Bradford.
- **Premier Inn Bradford Central / South / North** – Trusted mid-range chain; Bradford Central offers an on-site restaurant.
- **Oakwood Hall Hotel (Bingley)** – Elegant, countryside setting in its own gardens—great for peaceful stays or events.
- **Norland House** – A guesthouse-style accommodation located in Great Horton area of Bradford.
- **Hilton Bradford** – A respected hotel option in central Bradford for those looking for consistent service.
- **Novotel (Bradford)** – A modern chain hotel located in an industrial estate area of Bradford.
- **Cartwright Hotel** – A comfortable city hotel on Manningham Lane, outside the core but accessible.